

70% LOAD RESTRICTION NOTICE

Effective March 3, 2025 there is a 70% axle weight load restriction on Lake Country roads.

Seasonal load restrictions are put into place to protect our roads from damage or failure during the spring when the winter's frost is thawing and the snow melt and rain have saturated the road base material. Damage done to roads is usually deeper than just on the surface and can end up costing hundreds of thousands, or potentially millions, of dollars to repair.

Weight amounts depend on the type of vehicle being driven. There are also some exceptions. The restrictions do not apply to:

- Single steering axles
- Vehicles with a licensed GVW of 5,500 kg or less.

Road restrictions are all based on legal axle loading as defined in the Commercial Transportation Act & Regulations. 100% means you can still carry legal axle weights; overweight permits are no longer valid. For example, legal weight for a tandem axle group is 17,000 kg, so 100% load is 17,000 kg., 70% load restriction is 11,900 kg and 50% load restriction is 8,500 kg.

The Ministry of Transportation has also implemented load restrictions at this time. All road restrictions across the province are on DriveBC.ca via the [seasonal road restrictions tab](#). Drivers can [subscribe](#) to receive alerts pertaining to their routes.

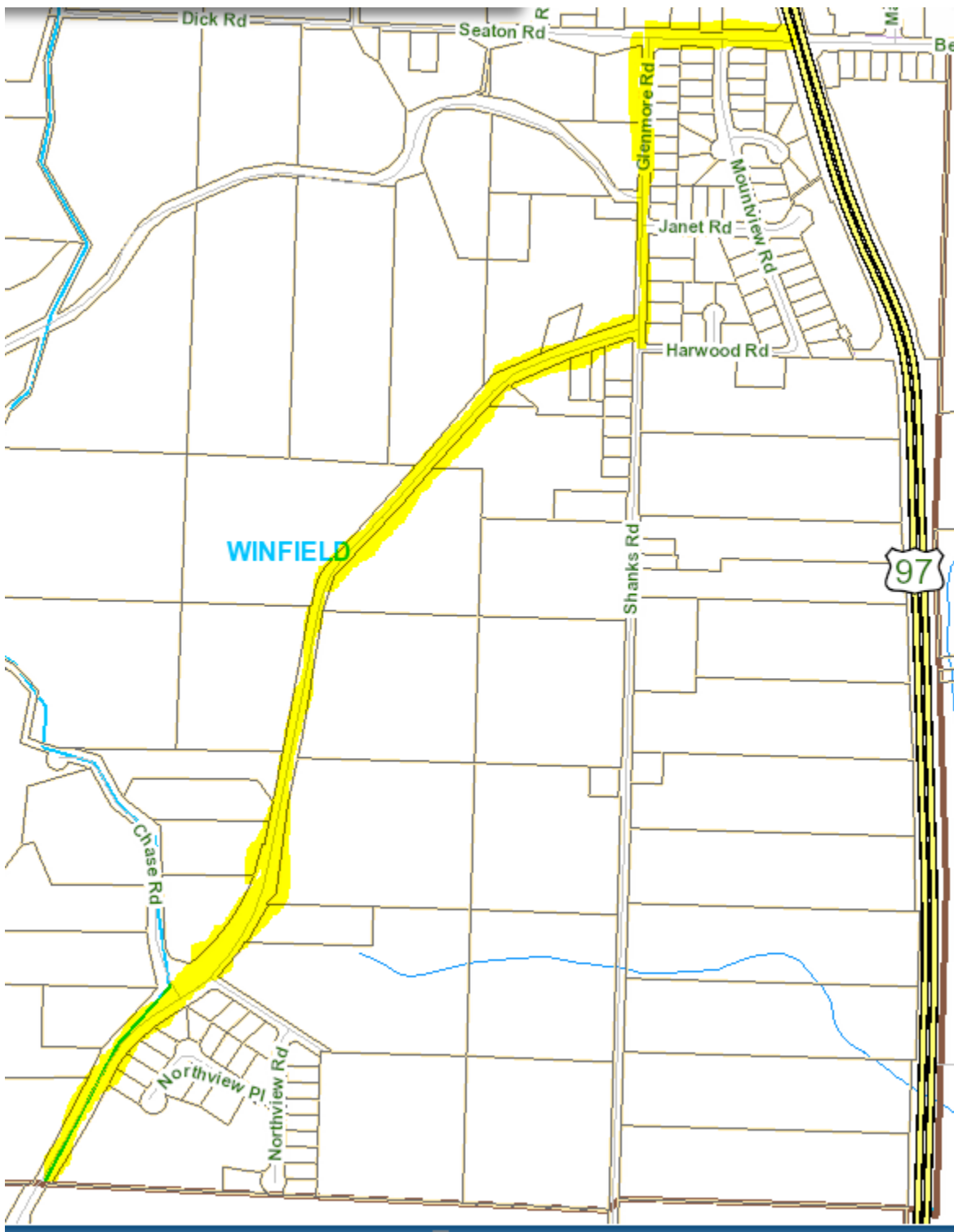
***NOTE:** No restrictions on Oyama Road along the Isthmus to Sawmill Road or the north end of Pelme wash Parkway. (See maps below)



No Road Restriction in Yellow



No Load Restriction along Beaver Rd in Lake Country to Kelowna Boundary
70% Load restriction after Kelowna Boundary



No Load Restriction along Glenmore Rd in Lake County