

DISTRICT OF LAKE COUNTRY

BYLAW 510

A BYLAW TO CLOSE A PORTION OF SHERMAN DRIVE AND REMOVE THE DEDICATION OF THIS PORTION OF HIGHWAY

WHEREAS Section 40 of the Community Charter Act provides that a Municipality may, by bylaw, close all or part of a highway that is vested in the municipality,

AND WHEREAS a municipality may remove from dedication, a highway that has been closed,

AND WHEREAS the Council of the District of Lake Country deems it necessary and expedient to close that portion of highway (Sherman Drive), shown as Closed Road on reference Plan prepared by Linden Fritsch, B.C. Land Surveyor, dated the 8th day of October, 2004, and as attached to this Bylaw as Schedule 'A'.

AND WHEREAS before adopting this bylaw, the Council has caused public notice to be given by advertisement once each week for two consecutive weeks in a newspaper published and circulating in the District of Lake Country.

NOW THEREFORE, the Council of the District of Lake Country in open meeting assembled, enacts as follows:

1. Authority is hereby given to the District of Lake Country to close those portions of highway (Sherman Drive), shown outlined and labeled as Closed Road on the attached plan prepared by Linden Fritsch, B.C. Land Surveyor and dated the 8th day of October, 2004.
2. Authority is hereby given to the District of Lake Country to remove the dedication as a highway those portions of highway (Sherman Drive), which have been closed in accordance to this bylaw.
3. The Mayor and Clerk are hereby authorized to execute such documents and legal survey plans, and take such steps as may be necessary to carry out the purpose of this bylaw.
4. This bylaw may be cited as "District of Lake Country Road Closure and Dedication Removal Bylaw 510, 2004".

READ A FIRST TIME this 26th day of October, 2004.

READ A SECOND TIME this 26th day of October, 2004.

READ A THIRD TIME this 26th day of October, 2004.

ADVERTISED on December 29, 2004 and January 5, 2005.

ADOPTED this 11th day of January, 2005.

“original signed by Rolly Hein”
Mayor

“original signed by Wendy Caban:
Deputy Clerk

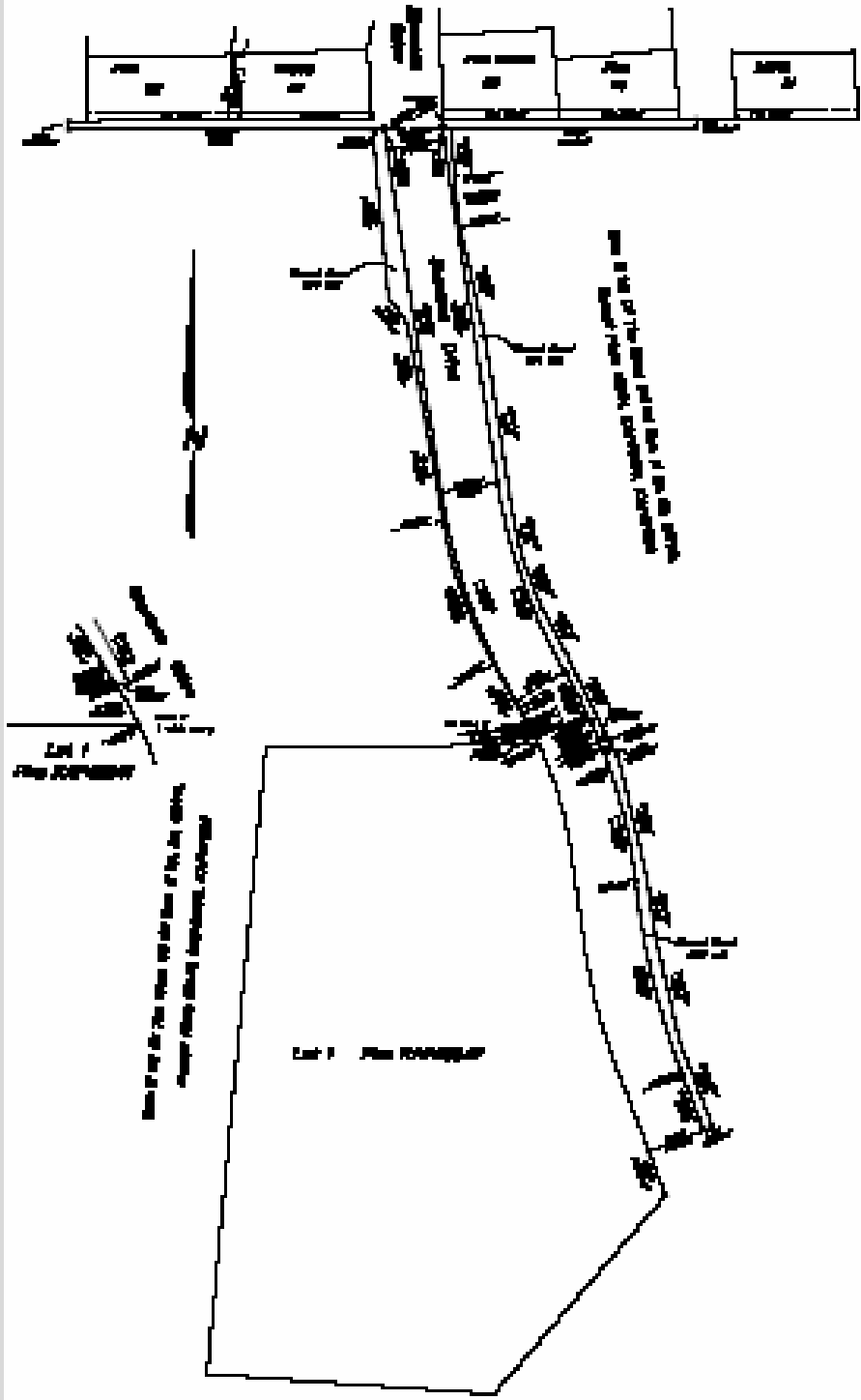
I hereby certify the foregoing to be a true and correct copy of the Bylaw cited as “District of Lake Country Road Closure and Dedication Removal Bylaw 510, 2004” adopted by the Municipal Council on the 11th day of January, 2005.

Dated at Lake Country, B.C.

Deputy Clerk

REFERENCE PLAN TO ACCOMPANY
DISTRICT OF LAKE COUNTY BYLAW NO. _____
CLOSING ROAD DESIGNATED ON PLAN JOINTLY DEC. 21, 2012, ABOVE
According To Section 40 OF The Community Charter & Section 500 OF The Local Time Act.

PLAN MAP
As Made To Be Filed With The Registrar



LEGEND
- - - - - BOUNDARY LINE
--- --- --- ADJACENT TO LOT OR TRACT
--- --- --- PUBLIC ROAD
--- --- --- PRIVATE ROAD
--- --- --- EASEMENT

Professional Engineer
Michael David Thompson, Inc.
1111 1st St. S. #200
St. Paul, MN 55108
612-222-1111
mthompson@mdtpe.com