

DISTRICT OF LAKE COUNTRY

BYLAW 926

A BYLAW TO CLOSE A PORTION OF KALAMALKA LANE TO TRAFFIC, REMOVE ITS DEDICATION AS A HIGHWAY AND TRANSFER THE CLOSED ROAD TO THE ADJACENT PROPERTY OWNERS

Council may permanently close a highway (road) that is vested in the municipality and may remove highway dedication;

AND Council deems it desirable to close portions of Kalamalka Lane between Kalamalka Lake and Evans Road, remove its dedication as a highway and dispose of the closed portions of the road for the purpose of consolidation with the adjacent lands;

NOW THEREFORE the Council of the District of Lake Country, in open meeting assembled, enacts as follows:

1. The District of Lake Country hereby authorizes the closure to traffic and the removal of highway dedication of those portions of Kalamalka Lane as outlined in bold red on the reference plan which is attached to this bylaw as Schedule "A";
2. The District of Lake Country hereby authorizes the disposal of that section of highway that has been closed by this bylaw and described in Section 1, to the owners of the adjacent property, being Lot 1, Sect. 14, Twp. 14, O.D.Y.D., Plan 6738 and Lot 2, Sect. 14, Twp. 14, O.D.Y.D., Plan 6738;
3. The Corporate Officer and the Mayor are hereby authorized as signatories on all legal plans, conveyances and agreements that are necessary for the closure, removal of dedication, and disposal of the closed road for consolidation with Lot 1, Sect. 14, Twp. 14, O.D.Y.D., Plan 6738 and Lot 2, Sect. 14, Twp. 14, O.D.Y.D., Plan 6738 upon payment of the appraised value;
4. This bylaw may be cited as "Road Closure and Removal of Highway Dedication Bylaw (Kalamalka Lane) 926, 2015".

READ A FIRST TIME this 18th day of August, 2015.

READ A SECOND TIME this 18th day of August, 2015.

ADVERTISED in the August 19 and 26, 2015 editions of the local newspaper and posted pursuant to section 94(1) of the *Community Charter*.

READ A THIRD TIME this this 1st day of September, 2015.

Certified correct at third reading.

September 2, 2015

Date at Lake Country, B.C.

Original signed by Reyna Seabrook

Corporate Officer

RECEIVED the approval of the Ministry of Transportation and Infrastructure this 9th day of September, 2015.

Original signed by Audrie Henry _____
Ministry of Transportation and Infrastructure

ADOPTED this 15th day of September, 2015.

Mayor

Corporate Officer

I hereby certify the foregoing to be a true and correct copy of the Bylaw cited as "Road Closure and Removal of Highway Dedication Bylaw (Kalamalka Lane) 926, 2015" as adopted by the Municipal Council on the 15th day of September, 2015.

Dated at Lake Country, BC

Corporate Officer

Schedule A

REFERENCE PLAN TO ACCOMPANY DISTRICT OF LAKE COUNTRY BYLAW No 900, 2014, CLOSING ROAD AND CANCELLING THE DEDICATION OF PART OF THE HIGHWAY DEDICATED BY PLAN 6738, Sec 14, Tp 14, ODYD

PLAN EPP45628

PENDING

Pursuant to Section 120 of the Land Title Act and Section 40 of the Community Charter BCGS 82L.014

SCALE 1 : 750



The intended plot size of this plan is 432mm in width by 560mm in height (C size) when plotted at a scale of 1:750

Grid bearings are derived from differential dual frequency GNSS observations and are referred to the central meridian of UTM Zone 11 (117° west longitude). To obtain local astronomic bearings referred to the meridian through TH187, subtract 1°49'45".

This plan shows horizontal ground-level distances in metres unless otherwise specified. To compute grid distances, multiply ground-level distances by the average combined factor of 0.9998960, which has been determined based on an ellipsoidal elevation of 384 metres.

The UTM coordinates and estimated horizontal positional accuracy achieved are derived from differential dual frequency GNSS observations post processed using the Precise Point Positioning service of Natural Resources Canada.

TH185 Datum NAD83 (CSRS) 2002.0 UTM Zone 11 UTM Northing 5,555,379.856 UTM Easting 329,579.933 Estimated horizontal positional accuracy 0.10m

LEGEND

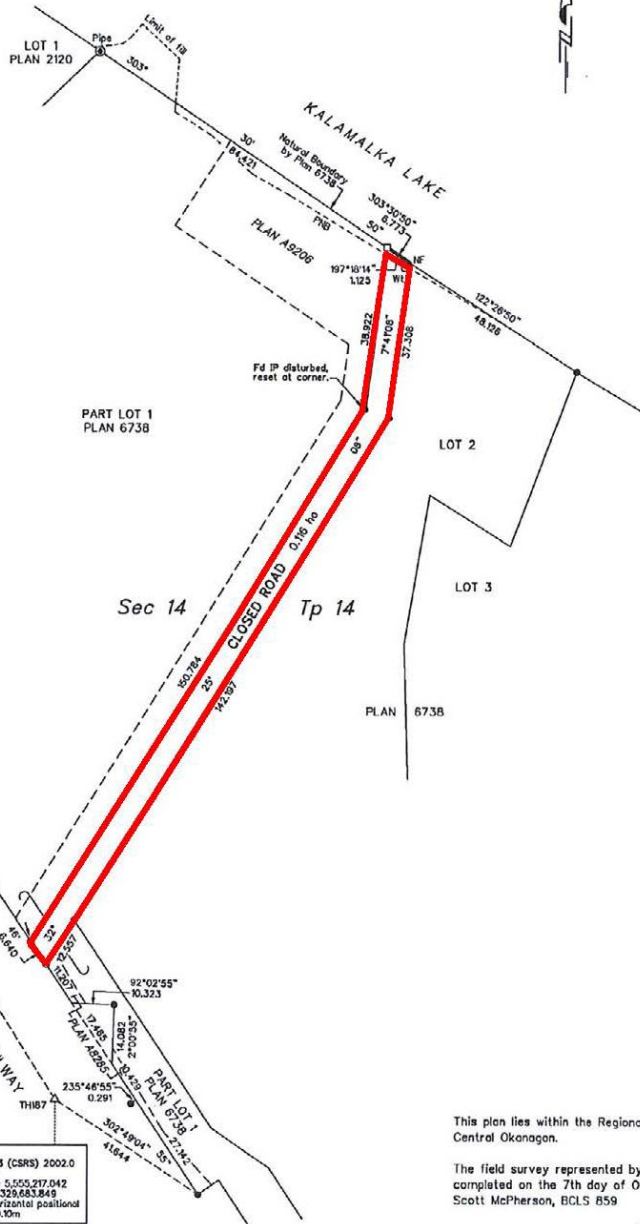
- denotes standard iron post found
○ denotes standard iron post placed
⊕ denotes non-standard post found
△ denotes traverse hub placed
□ denotes lead plug placed

Note: This plan shows one or more witness posts which are not set on the true corner(s).

WILLIAM E. MADDOX B. C. Land Surveyor 3500 - 30th Street, Vernon, B. C. V1T 5E8

96740R00

TH187 Datum NAD83 (CSRS) 2002.0 UTM Zone 11 UTM Northing 5,555,217.042 UTM Easting 329,683.849 Estimated horizontal positional accuracy 0.10m



This plan lies within the Regional District of Central Okanagan.

The field survey represented by this plan was completed on the 7th day of October, 2014. Scott McPherson, BCLS 859

FILE: R9674