

DISTRICT OF LAKE COUNTRY

BYLAW 842

A BYLAW TO CLOSE A PORTION OF DAVIDSON ROAD TO TRAFFIC, REMOVE ITS DEDICATION AS A HIGHWAY AND TRANSFER THE CLOSED ROAD TO THE ADJACENT PROPERTY OWNER

WHEREAS Council may permanently close a highway (road) that is vested in the municipality and may remove highway dedication;

AND WHEREAS Council deems it desirable to close portions of Davidson Road, remove its dedication as a highway and dispose of the closed portions of the road for the purpose of consolidation with the adjacent lands;

NOW THEREFORE the Council of the District of Lake Country, in open meeting assembled, enacts as follows:

1. The District of Lake Country hereby authorizes the closure to traffic and the removal of highway dedication of those portions of Davidson Road dedicated on Plan EPP23633 as outlined in bold black on the reference plan prepared by Fritsch Land Surveying Inc., B.C.L.S. on the 27th day of August, 2012, a reduced copy of which is attached to this bylaw as Schedule "A";
2. The District of Lake Country hereby authorizes the disposal of that section of highway that has been closed by this bylaw and described in Section 1, to the owner of the adjacent property, being Lot B Section 21 Township 20 ODYD Plan 1539 Except Plan 13395;
3. The Corporate Officer and the Mayor are hereby authorized as signatories on all legal plans, conveyances and agreements that are necessary for the closure, removal of dedication, and disposal of the closed road for consolidation with Lot B Section 21 Township 20 ODYD Plan 1539 Except Plan 13395;
4. This bylaw may be cited as "Road Closure and Removal of Highway Dedication Bylaw (Soltys) 842, 2012".

READ A FIRST TIME this 4th day of September, 2012.

READ A SECOND TIME this 4th day of September, 2012.

READ A THIRD TIME this 4th day of September, 2012.

ADVERTISED in the September 12, 14, 19 and 21, 2012 editions of the local newspaper and posted pursuant to section 94(1) of the *Community Charter*.

ADOPTED this 2nd day of October, 2012.

Mayor

Corporate Officer

I hereby certify the foregoing to be a true and correct copy of the Bylaw cited as "Road Closure and Removal of Highway Dedication Bylaw (Soltys) 842, 2012" as adopted by the Municipal Council on the day of, 2012.

Dated at Lake Country, BC

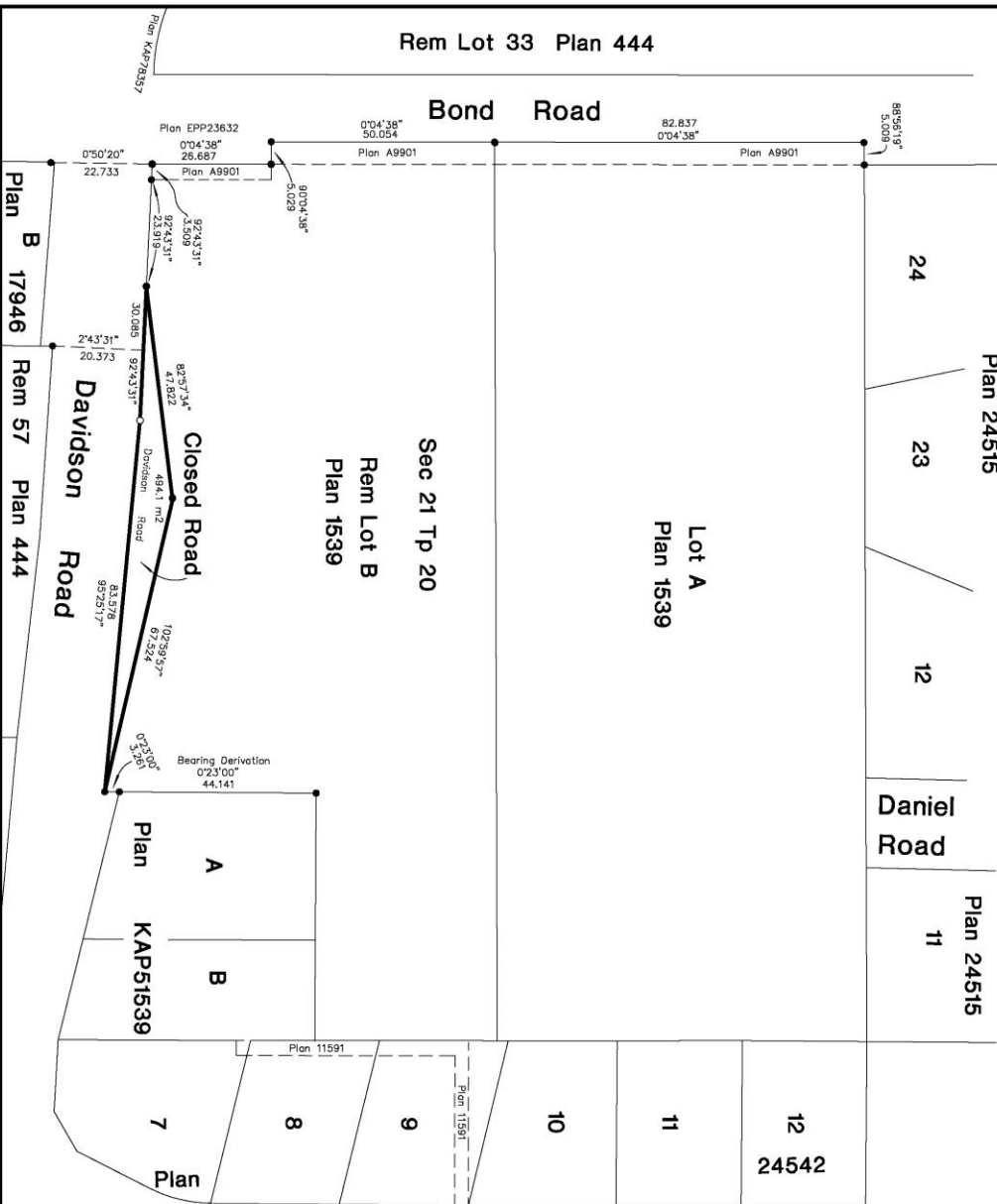
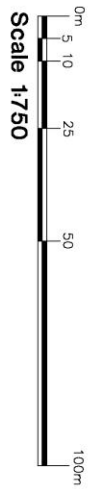
Corporate Officer

Schedule "A"

Reference Plan To Accompany District Of Lake Country
Road Closure Bylaw (Soltys) 842,2012
Being Part Of Road Created By
Plan 444, All In Section 21 Township 20 ODYD
Pursuant To Section 120 Of The Land Title Act &
Section 40 Of The Community Charter.

Plan EPP23633

BCGS 82L.003



This plan lies within the jurisdiction of the Approving Officer for the District Of Lake Country

Legend:

- - Standard Iron Post Found
- - Standard Iron Post Set
- Distances shown are in metres and denote the end of this plan shows horizontal ground-level distance unless otherwise specified.
- Bearings shown are astronomic and are derived from Plan KAP91539 District of Central Okanagan.
- The field survey represented by this plan was completed by Linden E Fritsch BCLS on the 3rd day of August 2012.

Fritsch Land Surveying Inc.
British Columbia & Canada Lands Surveyors
*202 - 586 Leon Avenue
Kelowna B.C., V1Y 6J6
(250) 762-0122